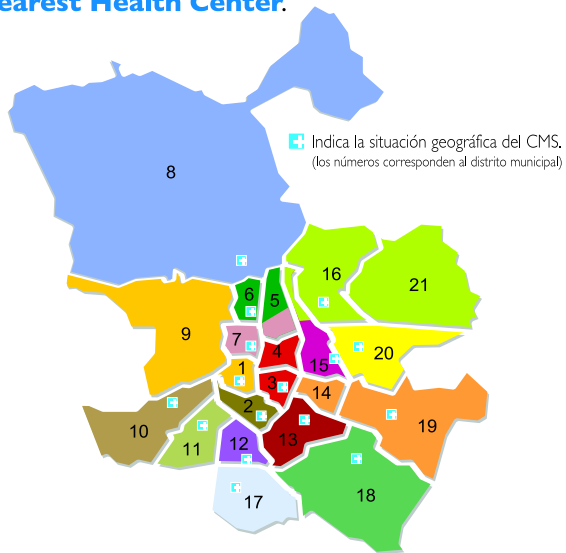


# ¿Where is the programme carried out?

You will be attended for **free** in the nearest **Health Center**.



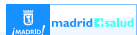
## Distritos Municipales

1. Centro
2. Arganzuela
3. Retiro
4. Salamanca
5. Chamartín
6. Tetuán
7. Chamberí
8. Fuencarral-El Pardo
9. Moncloa-Aravaca
10. Latina
11. Carabanchel
12. Usera
13. Puente de Vallecas
14. Moratalaz
15. Ciudad Lineal
16. Hortaleza
17. Villaverde
18. Villa de Vallecas
19. Vicálvaro
20. San Blas
21. Barajas

## Centros

- CMS Arganzuela
- CMS Carabanchel
- CMS Centro
- CMS Ciudad Lineal
- CMS Chamberí
- CMS Fuencarral
- CMS Hortaleza
- CMS Latina
- CMS Puente de Vallecas
- CMS Retiro
- CMS San Blas
- CMS Tetuán
- CMS Usera
- CMS Vicálvaro
- CMS Villa de Vallecas
- CMS Villaverde
- CMS Joven

PARA MÁS INFORMACIÓN:  
[www.madrid.es](http://www.madrid.es)  
[www.madridsalud.es](http://www.madridsalud.es)



## Prevention Programme Tuberculosis



Más información en Líneamadrid:

**010**Líneamadrid  
[madrid.es](http://madrid.es)  
[madridsalud.es](http://madridsalud.es)



## Prevention Programme Tuberculosis



*For your Health's sake, come to see us*



## ¿How to know one is infected with tuberculosis?

The infection is detected by a simple test called “**tuberculin test**” (**Mantoux**).

**Mantoux** is a safe and harmless test that may be done and repeated to any person

**Health professionals** are the ones in charge of carrying it out and interpreting its **results**.

## ¿What is tuberculosis?

**Tuberculosis** is a contagious disease that affects mainly the respiratory system.

It is a disease that may be **transmitted** to other people.

Contagion may take place when a person **coughs**, **sneezes** or **speaks**.



## ¿How is tuberculosis controlled?

The best way to prevent tuberculosis is by **diagnosing** and **treating** the infected people as soon as possible.

**Early diagnosis** is done through Mantoux test.

Nowadays there is an **efficient cure** for tuberculosis.

More information about this disease is available at **Health Centres**.



## ¿Who is it aimed at?

- Immigrants without health attention
- HIV-positive people
- Parenteral drug addicts.
- People living together with people infected with tuberculosis.
- Members of groups which are in a socially risky situation.

## ¿What services are available?

- Mantoux test
- Disease diagnosis (Thorax X-ray and culture)
- Medical consulting
- Treatment and prophylaxis in case it is necessary.
- The above services are free.

**Regional Programme for tuberculosis prevention and control.**